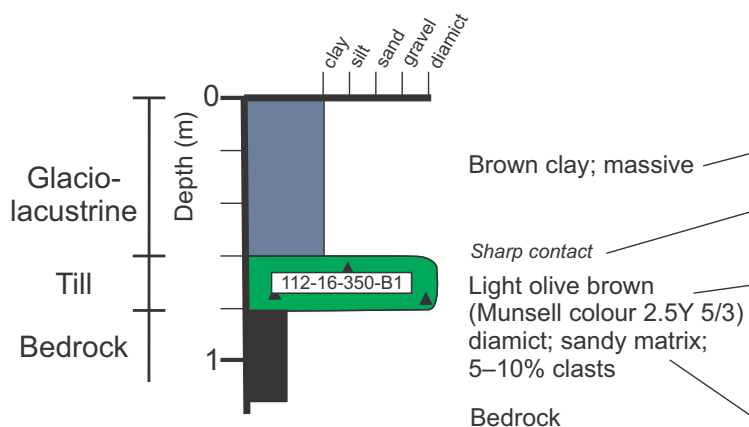


### Section 112-16-350

Elevation (top): 264 m asl

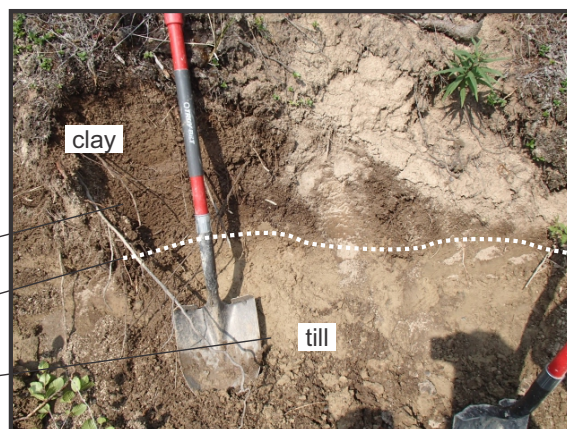
NAD83 UTM 14N: 6343305N, 546124E



### Bedrock ice-flow record 0.6 km east-northeast of section 112-16-350 (Trommelen, 2015)



Azimuth	Relative age
220°	1
208°	1
200°	1



**Figure 44:** Quaternary stratigraphy present at section 112-16-350. Till sample numbers are in white boxes. Munsell colour from Munsell Colour–X-Rite, Incorporated (2015).